

G3M678C User Manual

Version 1.0
Sept 2023



All materials related to this publication are subject to change without notice and its copyright totally belongs to ToupTek Photonics.

Please download the latest version from touptek-astro.com.

Contents

| | |
|--|----------|
| G3M678C User Manual | 1 |
| 1 Description and Features | 1 |
| 2 G3M678C Specifications and Performance | 1 |
| 2.1 Camera Specifications | 1 |
| 2.2 Sony IMX678 Sensitivity | 1 |
| 2.3 12bit ADC and ROI | 2 |
| 2.4 DDR3 Buffer | 2 |
| 2.5 Binning | 2 |
| 2.6 Conversion Gain Switch | 2 |
| 2.7 Power System | 3 |
| 2.8 Camera Performance Analysis..... | 3 |
| 3 Product Package and Connections | 3 |
| 3.1 Packing List | 3 |
| 3.2 Camera Dimension and Its Mount..... | 4 |
| 3.3 Camera Outline and Interface..... | 4 |
| 4 G3M678C and Its Software | 5 |
| 4.1 Application Installation | 5 |
| 4.1.1 <i>User-friendly UI Design</i> | 5 |
| 4.1.2 <i>Professional Camera Control Panel</i> | 6 |
| 4.1.3 <i>Practical Functions with Good Results</i> | 6 |
| 4.1.4 <i>Powerful Compatibility</i> | 7 |
| 4.1.5 <i>Hardware Requirement</i> | 7 |
| 4.2 G3M678C and Dshow | 7 |
| 4.3 G3M678C and the 3 rd Party Software | 7 |
| 4.3.1 <i>Support Software</i> | 7 |
| 4.3.2 <i>ASCOM Platform</i> | 7 |
| 4.3.3 <i>PHD Guiding</i> | 8 |
| 4.3.4 <i>Nebulosity</i> | 8 |
| 4.3.5 <i>MetaGuide</i> | 8 |
| 4.3.6 <i>MAXIMDL</i> | 8 |
| 4.3.7 <i>AstroArt</i> | 8 |
| 4.3.8 <i>FireCapture</i> | 8 |
| 4.3.9 <i>SharpCAP</i> | 8 |
| 4.3.10 <i>Registax</i> | 8 |
| 4.3.11 <i>AstroStack</i> | 8 |
| 4.3.12 <i>DeepSky Stacker</i> | 8 |
| 5 Service | 9 |

1 Description and Features

The G3M678C camera possesses an exceptionally strong capability to capture infrared light (with a high QE value at 850nm). It also has a large full well capacity, high dynamic range, high sensitivity, and low readout noise among other advantages. This results in outstanding performance in planetary photography, as well as in solar and lunar photography.

The features of G3M678C are listed below:

- IMX 678 Colorful CMOS Sensor
- Resolution: 3840 x 2160
- 2 um Square Pixels
- 1/1.8-inch Optical Format
- 12-bit ADC
- 512 Mbyte Memory
- G Sensitivity: 3637mv with 1/30s
- Low Noise: 0.42 to 2.43e-
- Support High Frame Rate Mode (47 FPS at all Pixel Readout 8 bit)
- SNR Max: 41 dB
- Dynamic Range: 74 dB

2 G3M678C Specifications and Performance

2.1 Camera Specifications

Table 1 G3M678C Technique Specifications.

| | | |
|---------------------------------|--|--|
| Sensor | Sony IMX678 back illuminated sensor | |
| Diagonal | 8.47 mm | |
| Image Resolution | 8.3 mega pixels (3840*2160) | |
| Pixel Size | 2 μ m \times 2 μ m | |
| Image Area | 7.7mm \times 4.3mm | |
| Max FPS at Resolution (USB 3.0) | 16bit | 8bit |
| | 23.4 FPS @ 3840*2160 68.1 FPS @ 1920*1080 | 47 FPS @ 3840*2160 71.4 FPS @ 1920*1080 |
| Max FPS at Resolution (USB 2.0) | 16bit | 8bit |
| | 2.5 FPS @ 3840*2160 7.9 FPS @ 1920*1080 | 4.8 FPS @ 3840*2160 7.9 FPS @ 1920*1080 |
| Shutter Type | Rolling shutter | |
| Exposure Time | 0.1ms – 1000s | |
| Gain | 1x – 150x | |
| SNR | 41 dB | |
| Dynamic Range | 74 dB | |
| Read Noise | 2.43 – 0.42 e- | |
| QE Peak | >83% | |
| Full Well | 11.6ke- | |
| ADC | 12bit | |
| DDR3 Buffer | 512MB (4Gb) | |
| Connection Port | USB3.0/USB2.0 | |
| Camera Adaptor | Standard 1.25" for telescope connection, and standard C adapter for industrial lens | |
| Protect Windows | IR-cut filter/AR-window | |
| Spectral Range | 380-690nm (with IR-cut filter) | |
| Capture/Control SDK | Windows/Linux/macOS/Android Multiple Platform SDK(Native C/C++, C#/VB.NET, Python, Java, DirectShow, Twain, etc.); | |
| Recording System | Still picture and movie | |
| Camera Dimensions | Diameter 37mm * height 72.4mm | |
| Camera Weight | 70 gram | |
| Back Focus Distance | 17.5mm with C adapter, 12.5 with CS adapter | |
| Cooling: | Passive cooling | |
| Supported OS | Microsoft® Windows® XP / Vista / 7 / 8 /10 (32 & 64 bit) OSx(Mac OS X) Linux | |

2.2 Sony IMX678 Sensitivity

The sensor G Sensitivity of G3M678C is 3637mv with 1/30s. Its spectral sensitivity is shown in Figure 1.

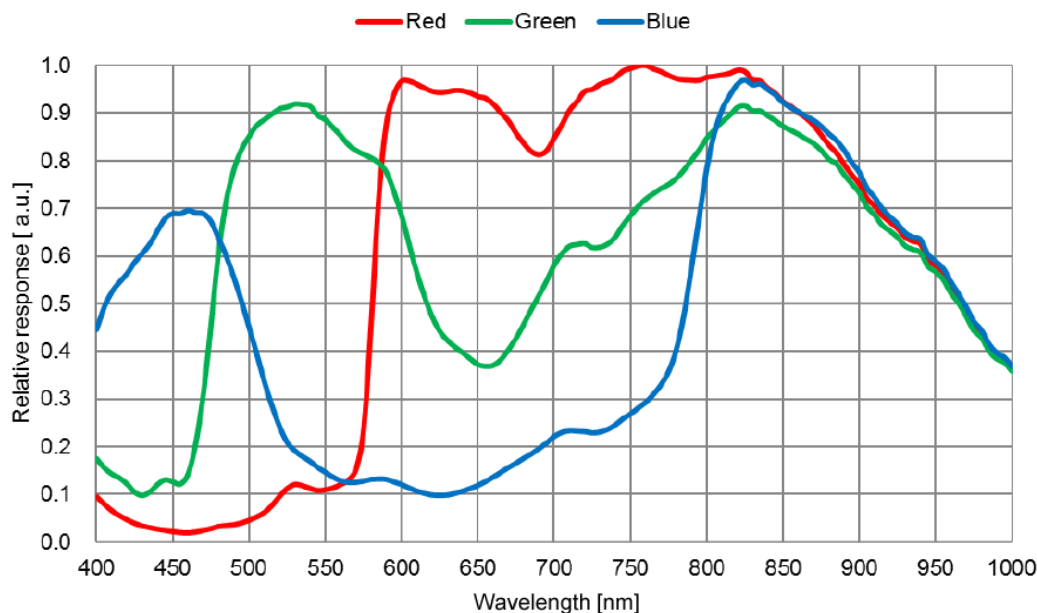


Figure 1 IMX678 Spectral Sensitivity Characteristic

2.3 12bit ADC and ROI

The G3M678C has built in 12bit ADC. It also has 12bit output mode for hardware binning and smaller resolution. The camera also supports hardware ROI, and the smaller the ROI size is, the higher the frame rate is.

Table 2 shows the frame rate of the G3M678C in 16/8bit mode, USB3.0 / USB2.0 data transfer interface at different resolutions:

Table 2 G3M678C Frame Rate at Different Resolution/Data Bit/Data Transfer (USB3.0/ USB2.0)

| Resolution | FPS | 16bit ADC | | 8bit ADC | |
|-------------|-----|-----------|--------|----------|---------|
| | | USB3.0 | USB2.0 | USB 3.0 | USB 2.0 |
| 3840 * 2160 | | 23.4 | 2.5 | 47 | 4.8 |
| 1920*1080 | | 68.1 | 7.9 | 71.4 | 7.9 |

2.4 DDR3 Buffer

G3M678C camera has a 512MB (4Gb) DDR3 buffer, which helps maintain the stability of data transmission, and effectively reduce the amp-glow caused because image data can be temporarily buffered without being sent hastily to the receiver.

2.5 Binning

The G3M678C supports digital binning from 1×1 to 8×8 in either stacking or averaging method, and hardware binning from 1×1 to 2×2 in averaging method. Hardware pixel binning is much faster than software binning.

2.6 Conversion Gain Switch

G3M678C support [HCG](#)、[LCG](#) mode switch.

2.7 Power System

The camera operates via a USB 3.0 interface. Upon establishing a connection with the host system using the USB 3.0 cable, the device is primed for operation.

2.8 Camera Performance Analysis

Camera performance can be evaluated with [e-/ADU](#), [Read Noise](#), [Full Well](#) and [Dynamic Range](#).

e-/ADU: The sensors found in cameras used for vision applications have pixels that convert incoming photons into electrons. Gain on a CCD/CMOS camera represents the conversion factor from electrons (e-) into digital counts, or [Analog-Digital Units \(ADUs\)](#). Gain is expressed as the number of electrons that get converted into a digital number, or electrons per ADU ([e-/ADU](#)).

Read Noise: Read Noise is the most important reference to measure the performance of a camera. Lower read noise usually means better SNR and better quality of image. [Read Noise](#) is created within the camera electronics during the readout process as the electrons are subjected to the analog to digital conversion, amplification and processing steps that enable an image to be produced.

Full Well: The electrons are held in each pixel and are converted into electrical charge which can be measured to show the amount of light that has fallen on each pixel. The maximum electrical charge possible is termed "[full well capacity](#)". Under the same conditions such as noise and A/D converter quality, the greater full well capacity a sensor has, the wider dynamic range the sensor has. As there is a limit to the depth to which pixels can be made, the full well capacity is often proportional to the frontal area of the light gathering element of the pixel.

Dynamic Range is the ratio between the maximum output signal level and the noise floor at minimum signal amplification (noise floor which is the RMS (root mean square) noise level in a black image). The noise floor of the camera contains sensor readout noise, camera processing noise and the dark current shot noise. [Dynamic range](#) represents the camera's ability to display/reproduce the brightest and darkest portions of the image and how many variations in between. This is technically intra-scene dynamic range. Within one image there may be a portion that is in complete black and a portion that is completely saturated.

For the G3M series camera, the [Gain Value](#) is in xxx% mode. Here xxx is used as the x axis ([Gain Value](#)) for the description of the camera performance

$$Rel\ Gain(dB) = 20 * \log_{10}[xxx(Gain\ Value)/100]$$

$$xxx(Gain\ Value) = 100 \times 10^{(Rel\ Gain(dB)/20)}$$

Read noise is the most important reference to measure the performance of a camera. Lower read noise usually means better SNR and better quality of image.

Camera setting used for performance analysis is shown below:

- Full resolution
- RAW 12-bit mode
- LCG

Figure 2 shows the curves of the camera analysis data in Table 3

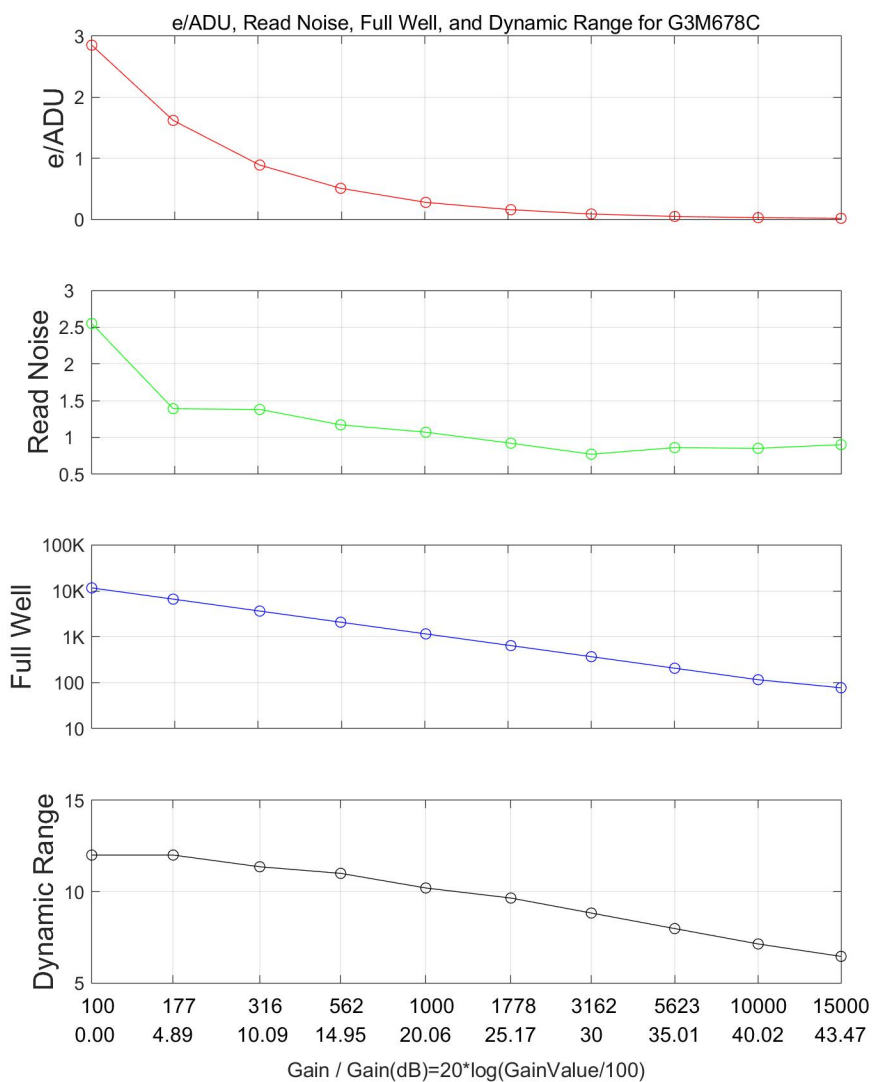


Figure 2 e-/ADU, Read Noise, Full Well and Dynamic Range for G3M678C

The camera analysis data is shown in Table 3:

Table 3 Camera Analysis Data

| Sensor Analysis Data | | | | | | | | | | |
|----------------------|------|------|-------|-------|-------|-------|------|-------|-------|-------|
| Gain Value | 100 | 177 | 316 | 562 | 1000 | 1778 | 3162 | 5623 | 10000 | 15000 |
| Rel Gain (dB) | 0 | 4.89 | 10.09 | 14.95 | 20.06 | 25.17 | 30 | 35.01 | 40.02 | 43.47 |
| e-/ADU | 2.85 | 1.62 | 0.89 | 0.51 | 0.28 | 0.16 | 0.09 | 0.05 | 0.03 | 0.02 |
| Read Noise (e-) | 2.55 | 1.39 | 1.38 | 1.17 | 1.07 | 0.92 | 0.77 | 0.86 | 0.85 | 0.9 |
| Full Well (ke-) | 11.7 | 6.7 | 3.7 | 2.1 | 1.2 | 0.6 | 0.4 | 0.2 | 0.1 | 0.07 |
| Dynamic Range (stop) | 12 | 12 | 11.37 | 10.8 | 10.08 | 9.45 | 8.91 | 7.91 | 7.1 | 6.45 |

Camera setting used for performance analysis is shown below:

- Full resolution
- RAW 12-bit mode
- HCG

Figure 3 shows the curves of the camera analysis data in Table 4

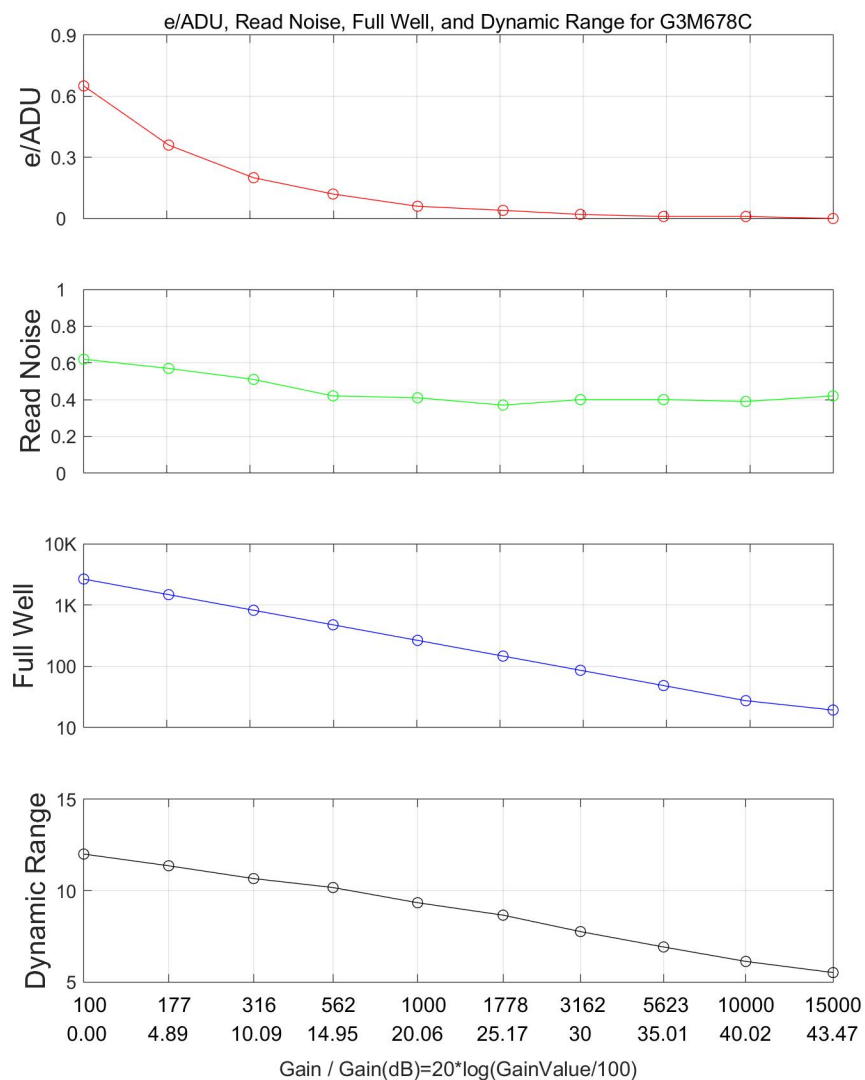


Figure 3 e/ADU, Read Noise, Full Well and Dynamic Range for G3M678C

The camera analysis data is shown in Table 4:

Table 4 Camera Analysis Data

| Sensor Analysis Data | | | | | | | | | | |
|----------------------|------|-------|-------|-------|-------|-------|------|-------|-------|-------|
| Gain Value | 100 | 177 | 316 | 562 | 1000 | 1778 | 3162 | 5623 | 10000 | 15000 |
| Rel Gain (dB) | 0.00 | 4.89 | 10.09 | 14.95 | 20.06 | 25.17 | 30 | 35.01 | 40.02 | 43.47 |
| e-/ADU | 0.64 | 0.36 | 0.2 | 0.11 | 0.06 | 0.04 | 0.02 | 0.01 | 0.01 | 0 |
| Read Noise (e-) | 0.54 | 0.45 | 0.44 | 0.4 | 0.38 | 0.36 | 0.36 | 0.36 | 0.38 | 0.39 |
| Full Well (ke-) | 2.6 | 1.5 | 0.8 | 0.5 | 0.3 | 0.1 | 0.08 | 0.05 | 0.03 | 0.02 |
| Dynamic Range (stop) | 12 | 11.67 | 10.86 | 10.21 | 9.43 | 8.63 | 7.86 | 7.04 | 6.15 | 5.62 |

3 Product Package and Connections

3.1 Packing List



Figure 4 Packing Information of G3M678C

Table 5 G3M678C Packing List

| Standard Camera Packing List | |
|-------------------------------------|---|
| A | Carton L:50cm W:30cm H:30cm (20pcs, 12~17Kg/ carton, 0.045m3), not shown in the photo |
| B | Gift box L:15cm W:15cm H:10cm (0.8~1.0Kg/ box) |
| C | One G3M series USB3.0 camera with 1.25" interface(outer) and C-Mount(inner) |
| D | High-speed USB3.0 A male to B male gold-plated connectors cable /2.0m |
| E | 2.0m guide cable |
| F | 1.25-inch nosepiece |
| G | CD (Driver & utilities software, Ø12cm) |
| Optional Accessory | |
| H | CS-mount ring |

3.2 Camera Dimension and Its Mount

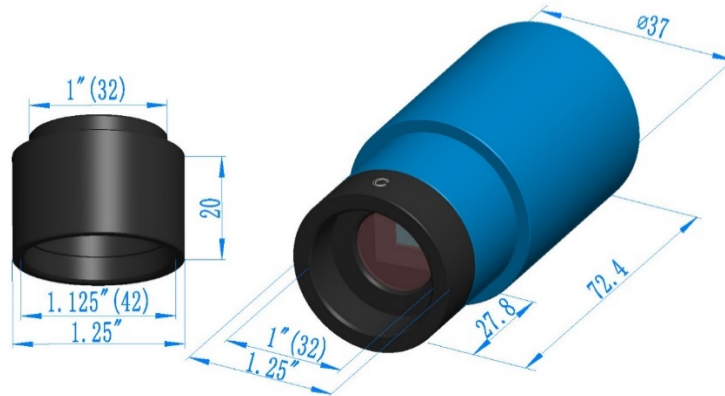


Figure 5 Dimension and Mount of G3M678C and 1.25" extender

The **G3M** series body, made from tough, alloy, ensures a heavy duty, workhorse solution. The camera is designed with a high-quality **IR-CUT** or **AR** to protect the camera sensor and block the IR elimination the reflection light. No moving parts included. These measures ensure a rugged, robust solution with an increased lifespan when compared to other industrial camera solutions.

Table 6 Adapter of G3M678C

| Item | Specification |
|------|---|
| 1 | Directly with 1.25" telescope; |
| 2 | G3M + 1.25" extender with 1.25" telescope |
| 3 | Standard C adapter connects to industrial C-mount adapter lens. |

3.3 Camera Outline and Interface

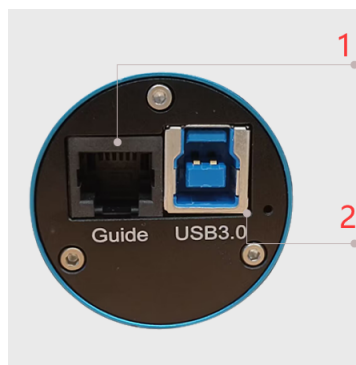


Figure 6 Camera Outline and Interface.

Table 7 Camera Outline and Interface List

| Item | Specification |
|------|---|
| 1 | A built-in ST4 auto guider port for the easy connection of the auto guider. |
| 2 | USB3.0 interface. |

4 G3M678C and Its Software

4.1 Application Installation

For software, customers are welcomed to go to our software website: <https://Touptek-astro.com/>, to download the latest ToupSky. The G3M can also be used with ASCOM, DirectShow SDK. If the third-party software is compatible with these SDK, customers can also download the software driver from our website and install the drivers into the third-party software.

ToupSky is ToupTek astronomy camera's Windows application. ToupSky is a professional software integrated with camera control, image capture & process, image browse, and analysis functions. ToupSky is born with the following features:

Windows:

- x86: XP SP3 or above; CPU supports SSE2 instruction set or above
- x64: Win7 or above

Features

- Full control of the camera
- Trigger mode and video mode support (raw format or RGB format)
- Automatic capture and quick record function
- Multi-language support
- Hardware ROI and digital binning function
- Extensive image processing functions, like image stitching, live stacking, flat field correction, dark field correction, etc.

Supported Camera:

- All ToupTek astronomy cameras

4.1.1 User-friendly UI Design

- Well-arranged menus and toolbars ensure quick operating;
- The unique design of 3 sidebars -- **Camera**, **Folders**, **Undo/Redo** are orderly classified;
- Convenient operating method (Double click or right-click context menu) as much as possible;
- Detailed help manual;

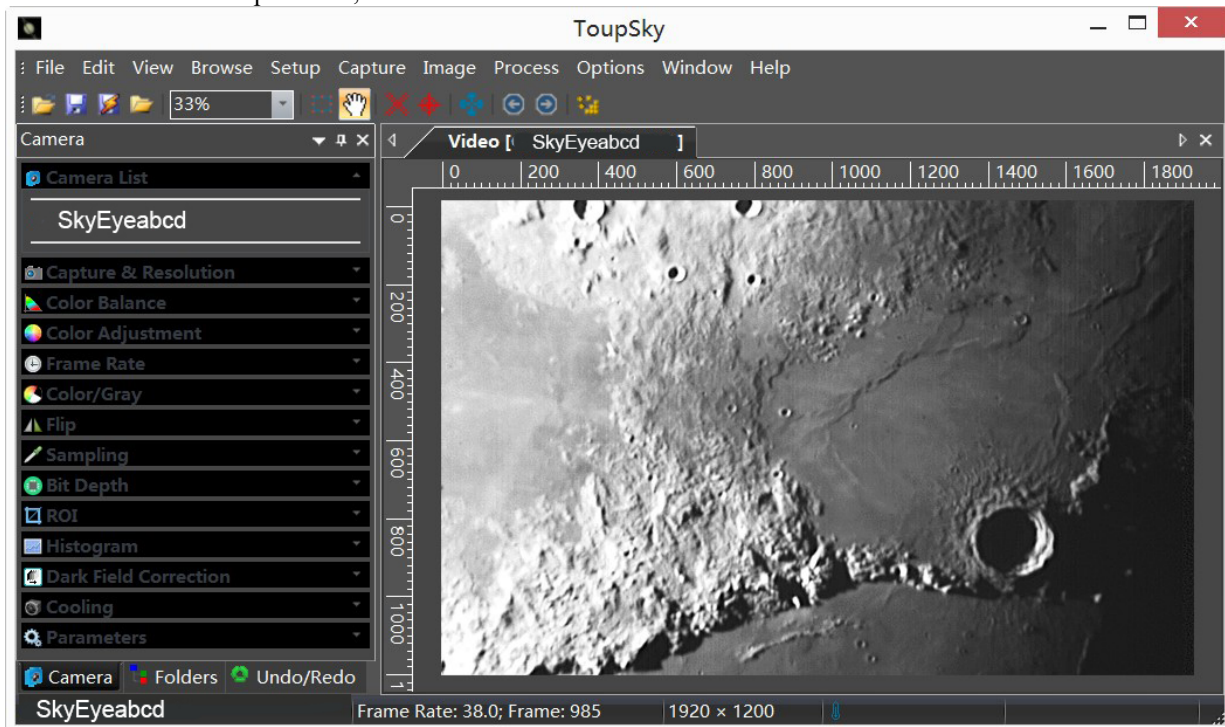


Figure 7 ToupSky and Its Video Window

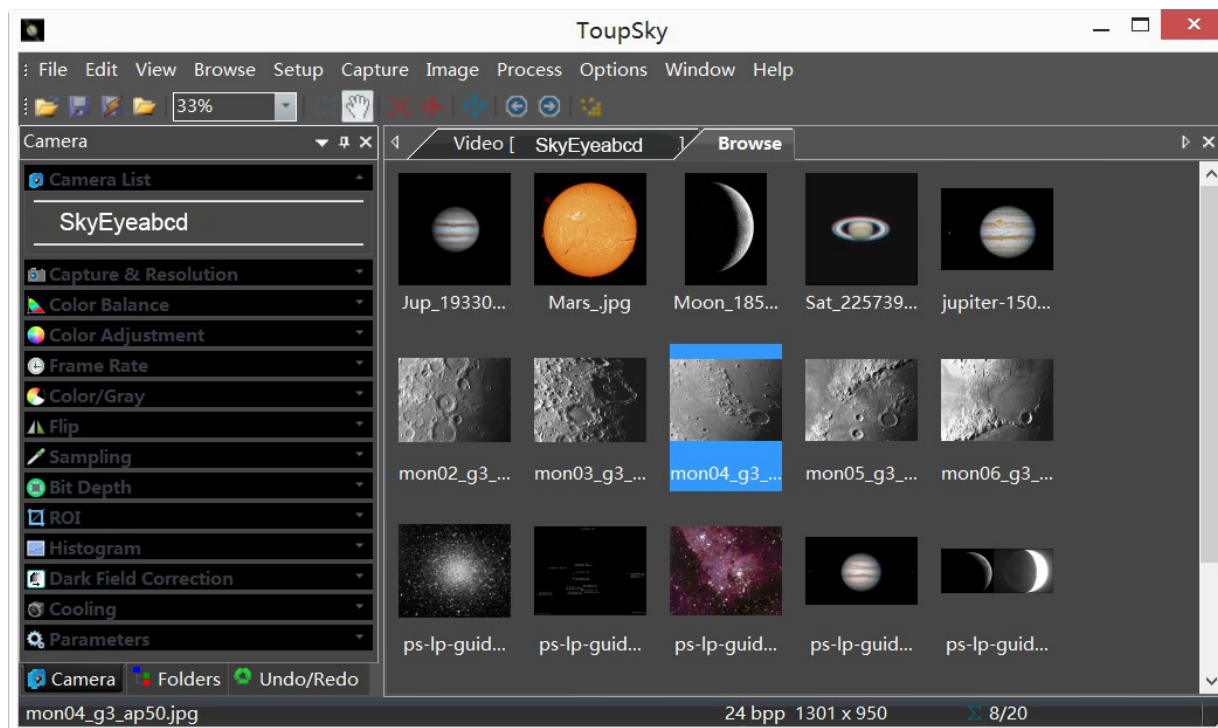


Figure 8 ToupSky and Its Browse Window

4.1.2 Professional Camera Control Panel

| | |
|-----------------------|---|
| Capture & Resolution | Set the live and snap resolution and snap the image or record video; |
| Exposure & Gain | Auto exposure (exposure target preset) and manual exposure (exposure time can be inputted manually); Up to 5 times gain; |
| Color Balance | Advanced single-click intelligent white balance setting, temperature and tint can be manually adjusted; |
| Color Adjustment | Hue, saturation, brightness, contrast, gamma initialization adjustment; |
| Frame Rate | Adjustment of frame rate available for different computer configurations; |
| Flip | Check the “horizontal” or “vertical” option to correct the sample direction; |
| Sampling | Bin mode can obtain low noise video stream; Skip mode obtains sharper and smoother video stream. Support video stream histogram extension, Negative and positive switching, Gray calibration, Clarity factor for focusing etc. |
| Bit Depth | Switch between 8 bits and 12 bits. 8 bits is the basic Windows image format. 12bits will have higher image quality but moderate FPS. |
| ROI | ROI, Region of interest. This function can set the ROI on the video window. When the ROI group was expanded, a dotted rectangle with "Handles" will appear around the video window that will let you alter the ROI. Use mouse button to adjust the ROI size. If ROI is ok, click Apply will set the video to ROI size, Defaults will return to the original size. |
| Dark Field Correction | To Enable the Dark Field Correction, one should capture the dark field image first. After the images are captured, the Enable button will be clickable. Checking the Enable button will enable the Dark Field correction. Unchecking it will disable the Dark Field Correction. |
| Cooling | Set the TE-Cooling target temperature and set the fan On/Off; |
| Parameters | Load, save, overwrite, import, export self-defined parameters of camera control panel (including calibration information, exposure and color setting information); |

4.1.3 Practical Functions with Good Results

| | |
|----------------------------------|---|
| Video functions | Various professional functions: Video broadcast; Time lapse capture; Video record; Video stream grid; Image stitch; Video scale bar, date etc. |
| Image Processing and Enhancement | Control and adjust image by denoise, sharpen, color toning deinterlace, all kinds of filtering algorithm and mathematical morphology algorithm, range, binary, pseudo color, surface plot and line profile ital.. |
| Image Stacking | Image stacking adopts advanced image matching technology. With the recorded video, regardless of shifting, rotation, scaling, the high-fidelity image can be stacked to decrease the image noise. |

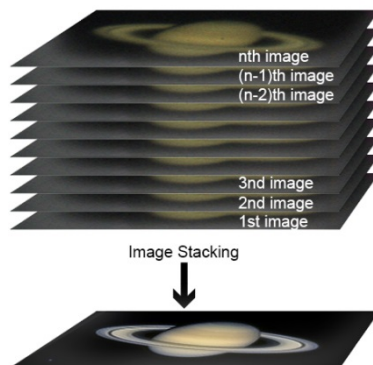


Figure 9 Image Stacking

4.1.4 Powerful Compatibility

| | |
|------------------|--|
| Video Interface | Support Twain, DirectShow, SDK Package (Native C++、C#/VB.NET) |
| Operating System | Compatible with Microsoft® Windows® XP / Vista / 7 / 8 /10 (32 & 64 bit), Mac OSX, Linux |
| Language Support | Unlimited language support, currently available in Simplified Chinese, Traditional Chinese, English, Russian, German, French, Polish and Turkish |

4.1.5 Hardware Requirement

| | |
|-----------------|------------------------------------|
| PC Requirements | CPU: Intel Core 2 2.8GHz or higher |
| | Memory:2GB or more |
| | USB port: USB3.0/USB2.0 port |
| | Display:17" or larger |
| | CD-ROM |

4.2 G3M678C and Dshow

ToupTekDshowAstroSetup (Click the left blue link to download)

DshowAstro is an interface driver providing Dshow standard support for ToupTek USB astronomy camera

Supported OS: Windows:

- x86: XP SP3 or above; CPU supports SSE2 instruction set or above
- x64: Win7 or above

Supported Camera:

- All ToupTek astronomy cameras

4.3 G3M678C and the 3rd Party Software

4.3.1 Support Software

| No. | Software | Version | WDM | ASCOM | Native |
|-----|-------------|--------------|-----|-------|--------|
| 1 | PHD Guiding | 2.3.0(2014) | √ | √ | √ |
| 2 | Nebulosity | 3.2.2(2014) | √ | × | / |
| 3 | MaxIm DL | 5.23(2013) | √ | × | / |
| 4 | SharpCap | 2.1(2014) | √ | × | / |
| 5 | MetaGuide | 5.2.0(2014) | √ | / | / |
| 6 | FireCapture | 2.4.05(2014) | √ | / | / |
| 7 | Astroart | 5.0(2014) | √ | × | / |

4.3.2 ASCOM Platform

All AstroCam telescope camera drivers request to install ASCOM platform, free.

<http://www.ascom-standards.org/index.htm>

You can download the ASCOM package from : <http://ascom-standards.org/Downloads/Index.htm>

4.3.3 PHD Guiding

A popular free guide software: <http://openphdguiding.org/>

ToupTek's telescope camera support Native/ASCOM/WDM driver to run the video.

4.3.4 Nebulosity

A popular cooled camera control/image process software directly supported via ASCOM.

4.3.5 MetaGuide

Autoguiding software with novel method to avoid the atmospheric agitation. The latest version support GCMOS01200KPB and the guide port: <http://www.astrogeeks.com/Bliss/MetaGuide/>

4.3.6 MAXIMDL

Famous full functional CCD Control/Image Process software. Popular used in US.

4.3.7 AstroArt

Famous full functional CCD Control/Image Process software. Popular used in Europe.

4.3.8 FireCapture

Great free planetary capture software. Support part of AstroCam series telescope camera.

4.3.9 SharpCAP

A nice free planetary capture software support WDM cameras includes AstroCam series telescope camera.

4.3.10 Registax

A popular free planetary stacking and processing software.

4.3.11 AstroStack

A planetary stacking and process software.

4.3.12 DeepSky Stacker

A free deep sky image stack and process software.

5 Service

For software upgrades, please refer to “Download” on our official website: <https://Touptek-astro.com/>

For customers who purchase the cameras from local dealer, please contact your dealer for more inquiry.

For technical support, please contact e-mail address: karas@Touptek-astro.com.